



NATA LIGHTING CO.,LTD.
www.nata.cn
Email:info@nata.com
Tel:+86-750-3770000 Fax:+86-750-3771111
Address:380JinOu Road,GaoXin Zone,Jiang Men City,Guangdong,China

NT

Client:

LumCAT: 1-1382-L

Luminaire: 92.70.427.00

Report No: 20231110-B005

Ballast type: AC

Test No: 20231110-C005

Voltage(V): 34.730

LampCAT: Fortimo_SLM_C_1204

Current(A): 0.320

Lamp flux(lm): 1750.7

Power (W): 11.113

Number of Lamps: 1

PF: 0.000

Length(mm): 0

Width(mm): 0

Phm Type: C

Height(mm): 0

Photometric Results

Lumens(lm): 1616.48, Efficiency(%): 92.34% , Luminous Efficacy(lm/W): 145.46

Central intensity(cd): 5356.568, Maximum intensity(cd): 5356.568

Angle of maximum intensity: C=0.0 γ =0.0

Beam Angle(50%Imax): [C0/180]Total=26.6

[C90/270]Total=26.6

Field angle(10%Imax): [C0/180]Total=58.4

[C90/270]Total=58.4

Beam angle of C0 plane : 26.57

Average BeamAngle(IEC 61341):26.57

Maximum s/h(1/2): C0_180=0.45 C90_270=0.45

Maximum s/h(1/4): C0_180=0.47 C90_270=0.47

Up flux rate of lamp(%): 0.00%

Down flux rate of lamp(%): 92.34%

Up flux rate of LUM(%): - -

Down flux rate of LUM(%): 100.00%

CIE Type : Direct lighting

Output flux ratio in π solid angle : 98.116%

Equipment: GMS1980
Temperature(°C): 0.0

Date: 2023/11/10
Humidity(%): 0.0%

Operator: NT07
Distance(m): 7.44

$\gamma(^{\circ})$	Average I(cd)	Zonal F(lm)	Sum F(lm)	Eff Flux(%)	Eff Sum(%)
0.0	5356.568	0.000	0	0.00%	0.00%
1.0	5339.754	5.118	5.118	0.29%	0.32%
2.0	5281.564	15.245	20.363	0.87%	1.26%
3.0	5190.438	25.046	45.408	1.43%	2.81%
4.0	5036.071	34.231	79.64	1.96%	4.93%
5.0	4855.825	42.554	122.194	2.43%	7.56%
6.0	4629.152	49.846	172.04	2.85%	10.64%
7.0	4389.333	55.978	228.018	3.20%	14.11%
8.0	4140.311	61.045	289.063	3.49%	17.88%
9.0	3878.419	64.987	354.05	3.71%	21.90%
10.0	3598.192	67.661	421.711	3.86%	26.09%
11.0	3312.498	69.052	490.763	3.94%	30.36%
12.0	3035.176	69.389	560.152	3.96%	34.65%
13.0	2757.716	68.747	628.899	3.93%	38.91%
14.0	2476.797	67.001	695.9	3.83%	43.05%
15.0	2242.028	64.782	760.682	3.70%	47.06%
16.0	1998.057	62.129	822.812	3.55%	50.90%
17.0	1794.564	59.061	881.873	3.37%	54.56%
18.0	1609.129	56.120	937.992	3.21%	58.03%
19.0	1418.907	52.682	990.674	3.01%	61.29%
20.0	1244.584	48.749	1039.423	2.78%	64.30%
21.0	1163.270	46.236	1085.659	2.64%	67.16%
22.0	1070.532	44.889	1130.548	2.56%	69.94%
23.0	972.431	42.867	1173.415	2.45%	72.59%
24.0	897.054	40.874	1214.289	2.33%	75.12%
25.0	825.433	39.166	1253.454	2.24%	77.54%
26.0	760.752	37.442	1290.896	2.14%	79.86%
27.0	691.581	35.532	1326.428	2.03%	82.06%
28.0	620.735	33.225	1359.653	1.90%	84.11%
29.0	550.464	30.642	1390.295	1.75%	86.01%
30.0	471.447	27.591	1417.886	1.58%	87.71%
31.0	401.590	24.295	1442.182	1.39%	89.22%
32.0	331.873	21.013	1463.195	1.20%	90.52%
33.0	268.790	17.696	1480.89	1.01%	91.61%
34.0	230.575	15.112	1496.003	0.86%	92.55%
35.0	176.786	12.651	1508.654	0.72%	93.33%
36.0	124.926	9.607	1518.26	0.55%	93.92%
37.0	93.596	7.127	1525.387	0.41%	94.36%

$\gamma(^{\circ})$	Average I(cd)	Zonal F(lm)	Sum F(lm)	Eff Flux(%)	Eff Sum(%)
38.0	78.035	5.729	1531.116	0.33%	94.72%
39.0	68.998	5.019	1536.135	0.29%	95.03%
40.0	61.671	4.557	1540.692	0.26%	95.31%
41.0	55.561	4.175	1544.866	0.24%	95.57%
42.0	50.683	3.860	1548.727	0.22%	95.81%
43.0	46.241	3.590	1552.317	0.21%	96.03%
44.0	41.633	3.317	1555.633	0.19%	96.24%
45.0	37.488	3.041	1558.674	0.17%	96.42%
46.0	33.607	2.780	1561.455	0.16%	96.60%
47.0	30.216	2.538	1563.993	0.14%	96.75%
48.0	27.538	2.335	1566.328	0.13%	96.90%
49.0	25.158	2.164	1568.492	0.12%	97.03%
50.0	23.096	2.012	1570.504	0.11%	97.16%
51.0	21.380	1.882	1572.385	0.11%	97.27%
52.0	19.955	1.774	1574.159	0.10%	97.38%
53.0	18.730	1.683	1575.842	0.10%	97.49%
54.0	17.679	1.605	1577.447	0.09%	97.59%
55.0	16.834	1.541	1578.987	0.09%	97.68%
56.0	16.115	1.489	1580.476	0.09%	97.77%
57.0	15.416	1.442	1581.918	0.08%	97.86%
58.0	14.883	1.401	1583.319	0.08%	97.95%
59.0	14.406	1.369	1584.688	0.08%	98.03%
60.0	13.991	1.342	1586.03	0.08%	98.12%
61.0	13.610	1.317	1587.347	0.08%	98.20%
62.0	13.292	1.296	1588.643	0.07%	98.28%
63.0	12.967	1.277	1589.92	0.07%	98.36%
64.0	12.655	1.257	1591.178	0.07%	98.43%
65.0	12.392	1.240	1592.417	0.07%	98.51%
66.0	12.095	1.222	1593.639	0.07%	98.59%
67.0	11.776	1.200	1594.839	0.07%	98.66%
68.0	11.479	1.178	1596.017	0.07%	98.73%
69.0	11.188	1.156	1597.174	0.07%	98.81%
70.0	10.863	1.133	1598.306	0.06%	98.88%
71.0	10.538	1.106	1599.412	0.06%	98.94%
72.0	10.240	1.080	1600.493	0.06%	99.01%
73.0	9.936	1.055	1601.548	0.06%	99.08%
74.0	9.638	1.029	1602.577	0.06%	99.14%
75.0	9.396	1.006	1603.583	0.06%	99.20%

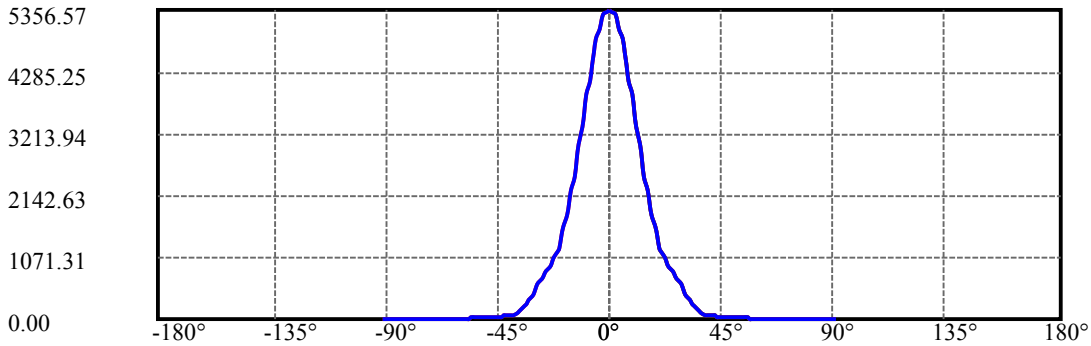
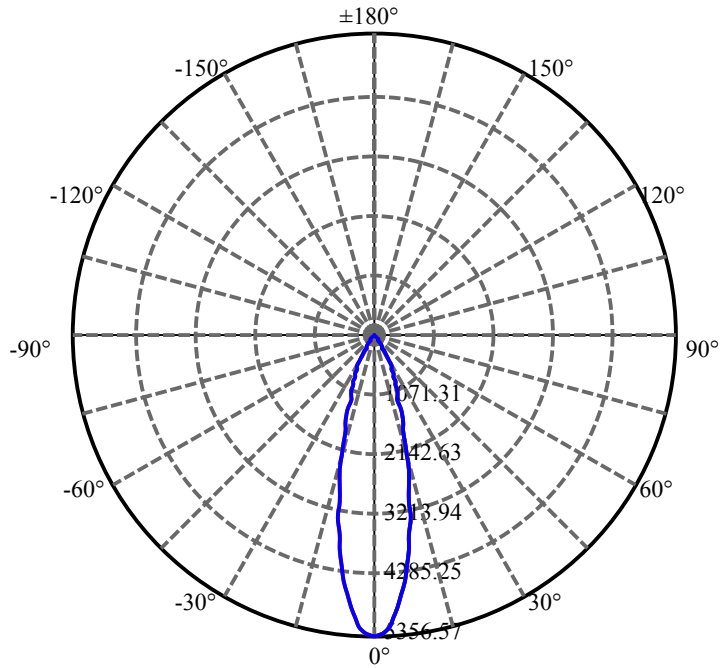
$\gamma(^{\circ})$	Average I(cd)	Zonal F(lm)	Sum F(lm)	Eff Flux(%)	Eff Sum(%)
76.0	9.133	0.984	1604.566	0.06%	99.26%
77.0	8.891	0.961	1605.527	0.05%	99.32%
78.0	8.684	0.941	1606.468	0.05%	99.38%
79.0	8.497	0.923	1607.391	0.05%	99.44%
80.0	8.296	0.905	1608.296	0.05%	99.49%
81.0	8.102	0.887	1609.183	0.05%	99.55%
82.0	7.929	0.869	1610.053	0.05%	99.60%
83.0	7.770	0.853	1610.906	0.05%	99.65%
84.0	7.597	0.837	1611.743	0.05%	99.71%
85.0	7.473	0.822	1612.566	0.05%	99.76%
86.0	7.341	0.810	1613.375	0.05%	99.81%
87.0	7.210	0.796	1614.172	0.05%	99.86%
88.0	7.078	0.783	1614.954	0.04%	99.91%
89.0	6.954	0.769	1615.724	0.04%	99.95%
90.0	6.905	0.760	1616.483	0.04%	100.00%

ZONAL LUMEN SUMMARY

Zone	Lumens	%Lamp	%Fixt
0-30	1417.89	80.99%	87.71%
0-40	1540.69	88.01%	95.31%
0-60	1586.03	90.60%	98.12%
0-90	1615.72	92.29%	99.95%
0-120	1615.72	92.29%	99.95%
0-180	1616.48	92.34%	100.00%
60-90	29.69	1.70%	1.84%
90-120	0.00	0.00%	0.00%
90-130	0.00	0.00%	0.00%
90-150	0.00	0.00%	0.00%
90-180	0.00	0.00%	0.00%
0-26.06	1293.19	73.87%	80.00%

ZONAL LUMEN SUMMARY

0-10	421.71
10-20	617.71
20-30	378.46
30-40	122.81
40-50	29.81
50-60	15.53
60-70	12.28
70-80	9.99
80-90	7.43
90-100	0.00
100-110	0.00
110-120	0.00
120-130	0.00
130-140	0.00
140-150	0.00
150-160	0.00
160-170	0.00
170-180	0.00



C0(Max): ———

C0/C180: ———

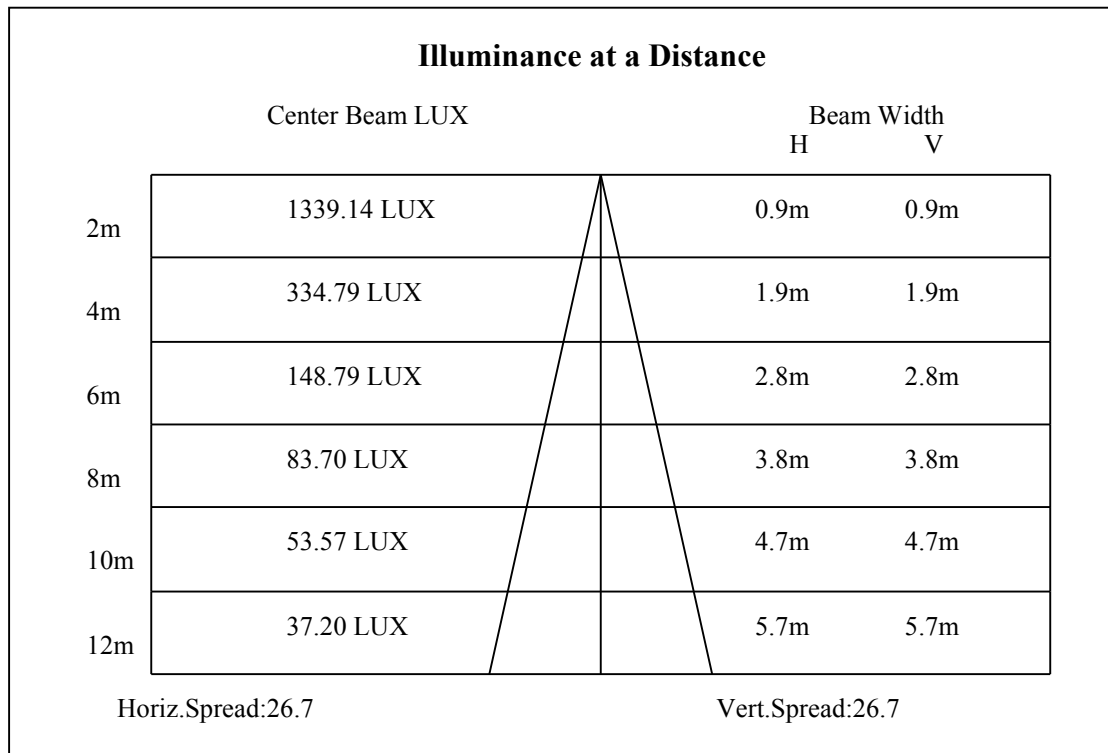
C90/C270: ———

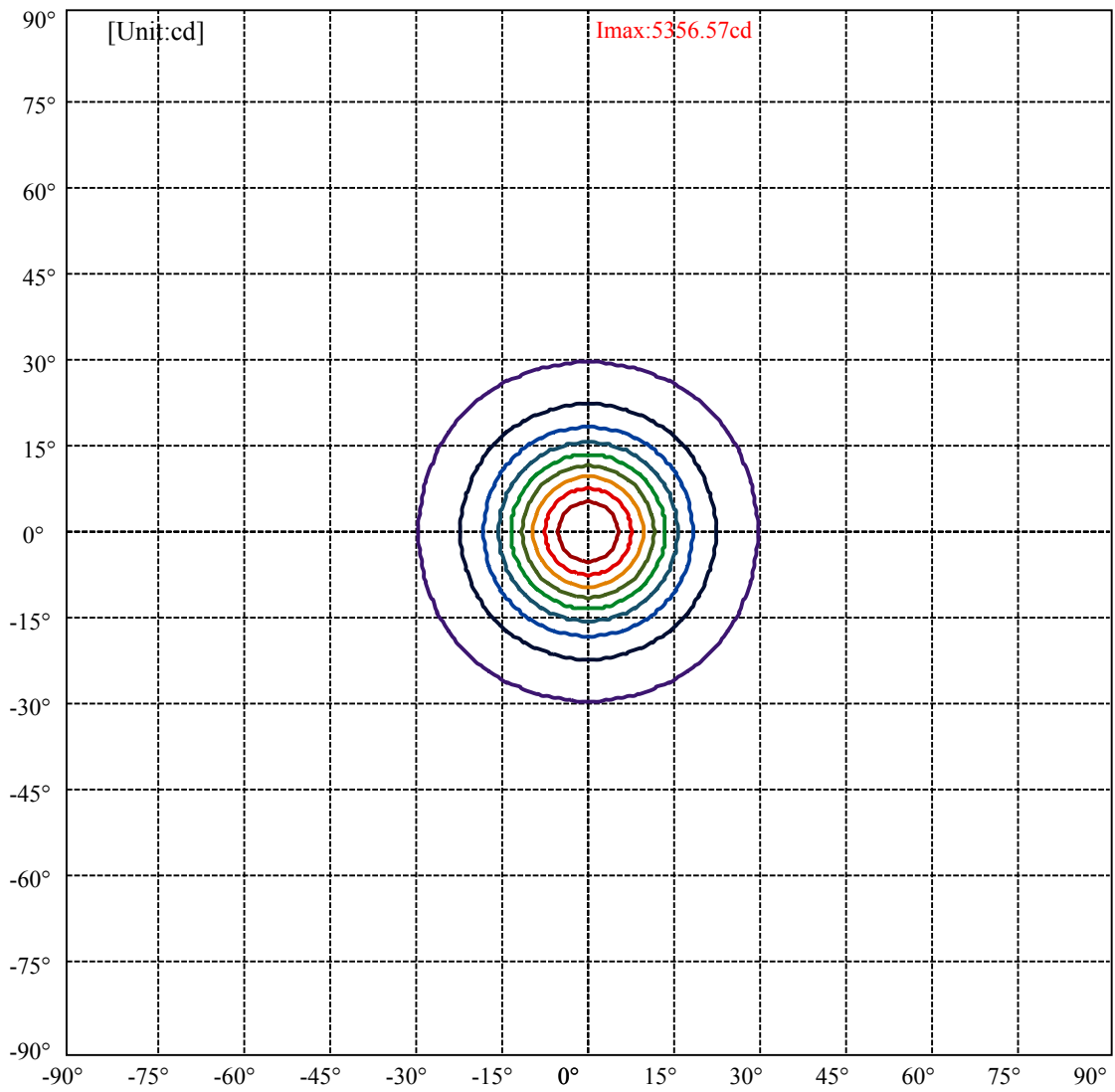
Field angle(10%Imax):C0/180Left:29.2 Right:29.2

:C90/270Left:29.2 Right:29.2

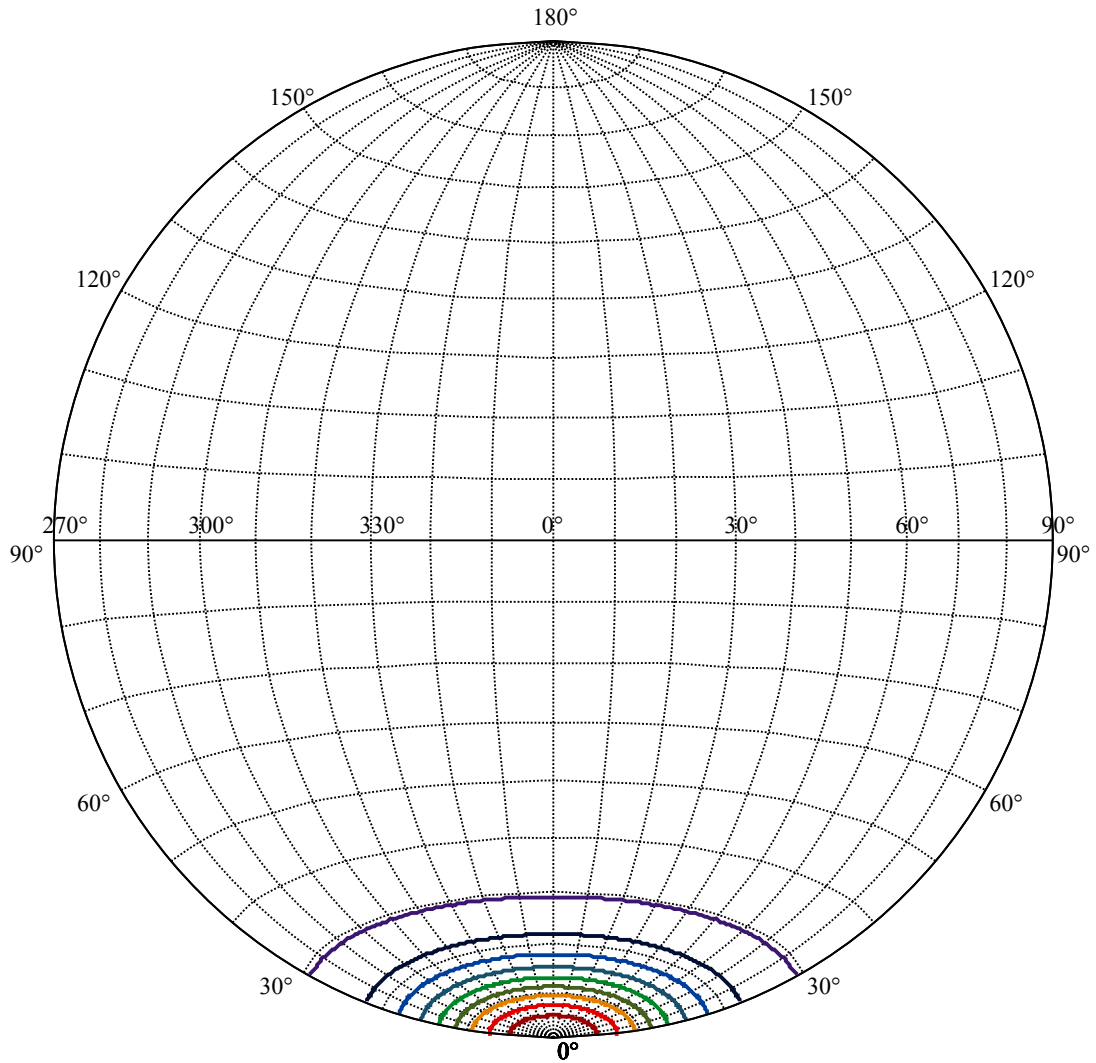
Beam Angle(50%Imax):C0/180Left:13.3 Right:13.3

:C90/270Left:13.3 Right:13.3





(10%Imax) 535.657	—
(20%Imax) 1071.31	—
(30%Imax) 1606.97	—
(40%Imax) 2142.63	—
(50%Imax) 2678.28	—
(60%Imax) 3213.94	—
(70%Imax) 3749.6	—
(80%Imax) 4285.25	—
(90%Imax) 4820.91	—



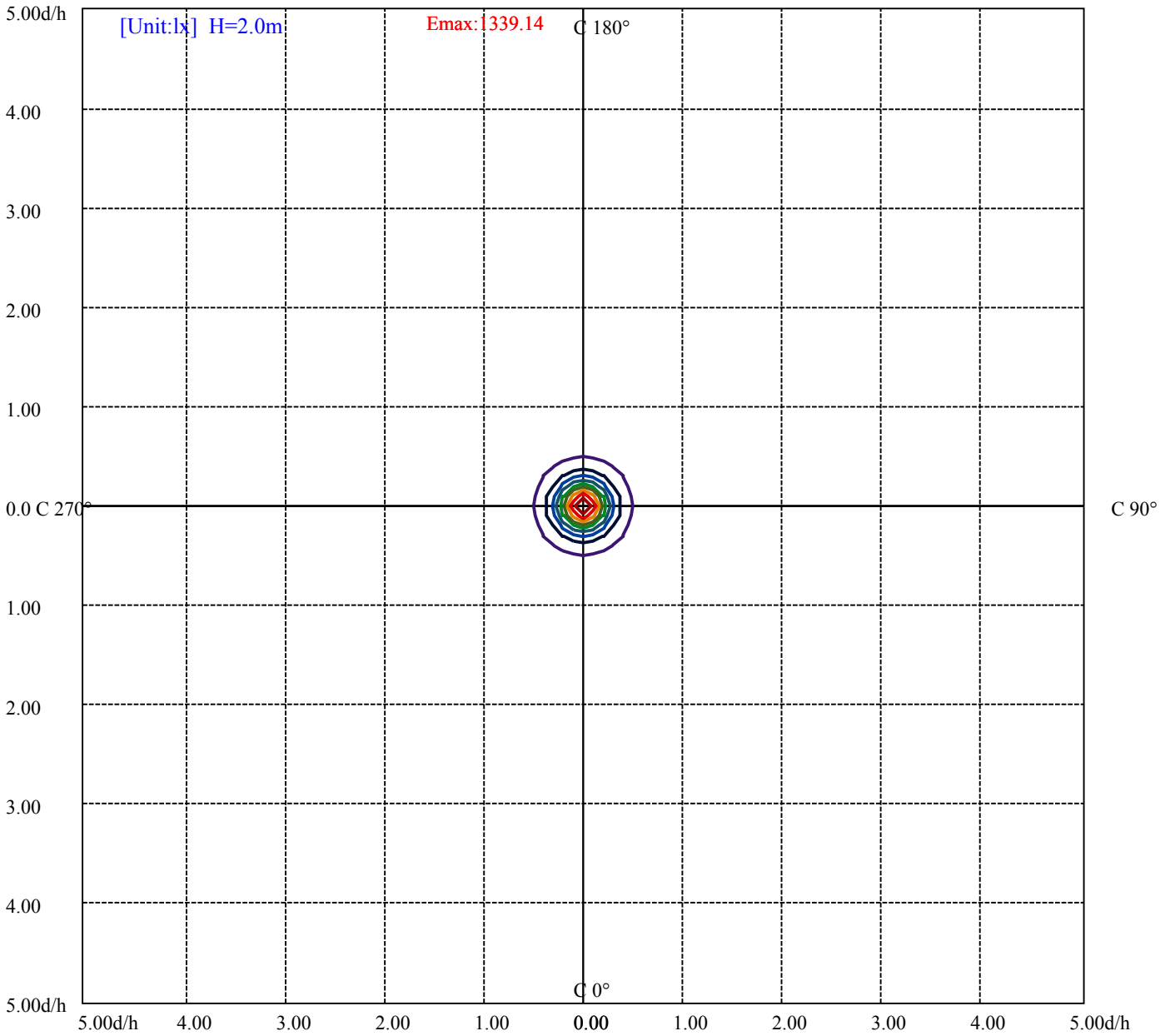
House

[Unit:cd]

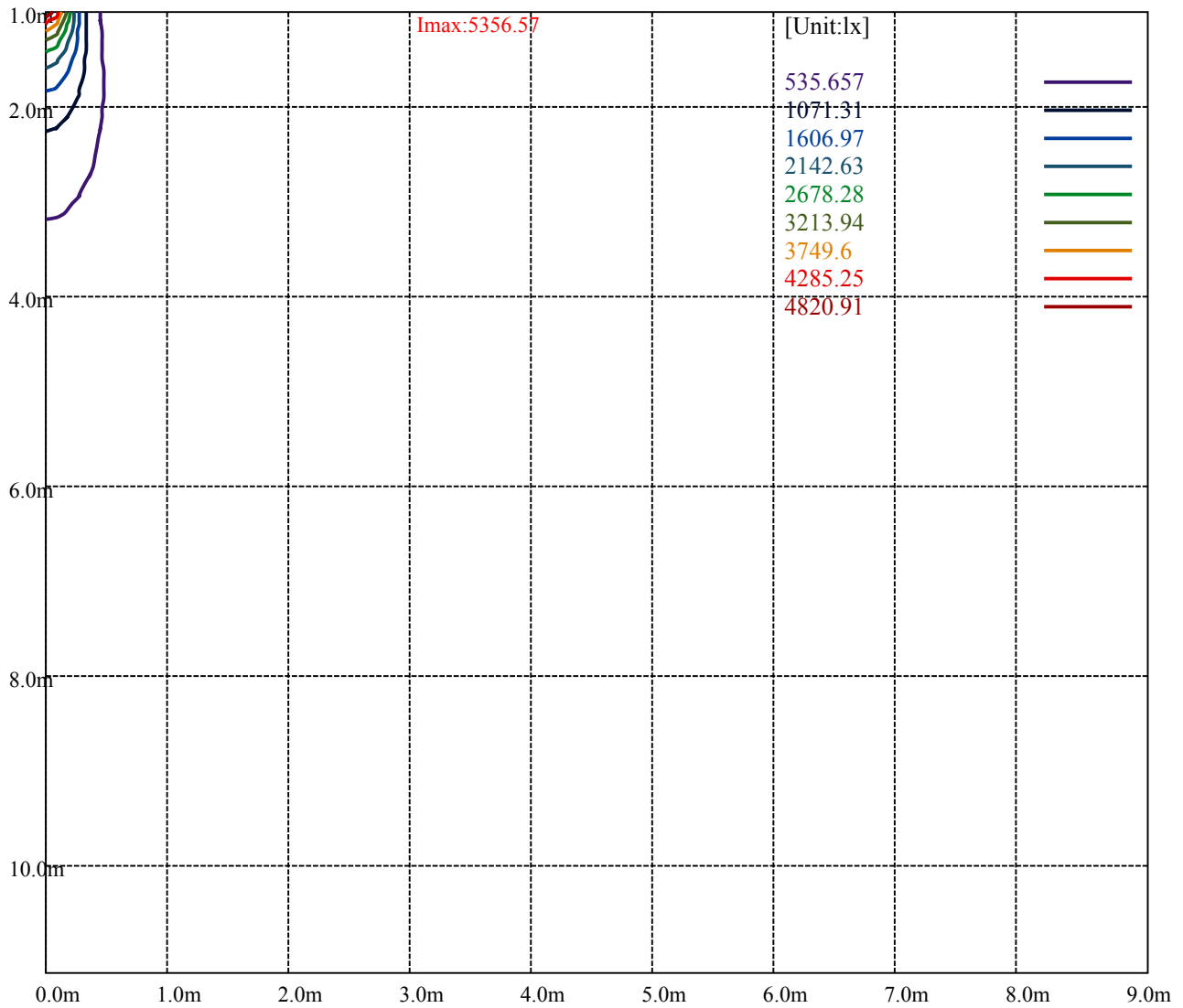
Road

Imax:5356.57

(10%Imax)	535.657	—
(20%Imax)	1071.31	—
(30%Imax)	1606.97	—
(40%Imax)	2142.63	—
(50%Imax)	2678.28	—
(60%Imax)	3213.94	—
(70%Imax)	3749.6	—
(80%Imax)	4285.25	—
(90%Imax)	4820.91	—



(10%Emax) 133.9142	—
(20%Emax) 267.8275	—
(30%Emax) 401.7425	—
(40%Emax) 535.6575	—
(50%Emax) 669.57	—
(60%Emax) 803.485	—
(70%Emax) 937.4	—
(80%Emax) 1071.313	—
(90%Emax) 1205.228	—



Luminance Table

γ	45	50	55	60	65	70	75	80	85
C0	0	0	0	0	0	0	0	0	0
C45	0	0	0	0	0	0	0	0	0
C90	0	0	0	0	0	0	0	0	0

L(Hor)(65)	L(Ver)(65)	L45(65)	L(Hor)(75)	L(Ver)(75)	L45(75)	L(Hor)(85)	L(Ver)(85)	L45(85)
0	0	0	0	0	0	0	0	0

Glare Table

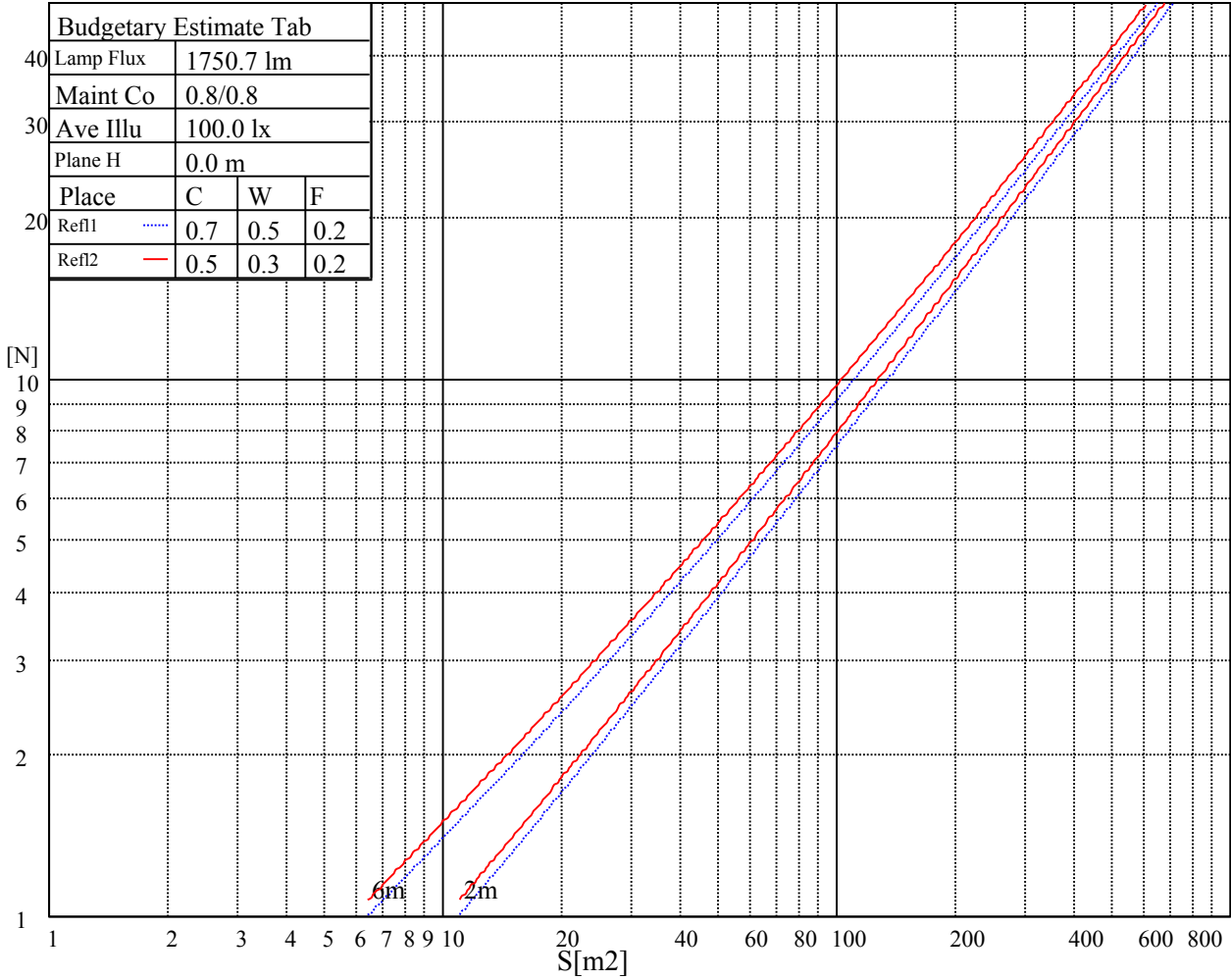
Glare	Quality	Service Values Illuminance(lx)							
1.15	A	2000	1000	500	<=300				
1.5	B		2000	1000	500	<=300			
1.85	C			2000	1000	500	<=300		
2.2	D				2000	1000	500	<=300	
2.55	E					2000	1000	500	<=300
		a	b	c	d	e	f	g	h

Luminance Limiting Curve

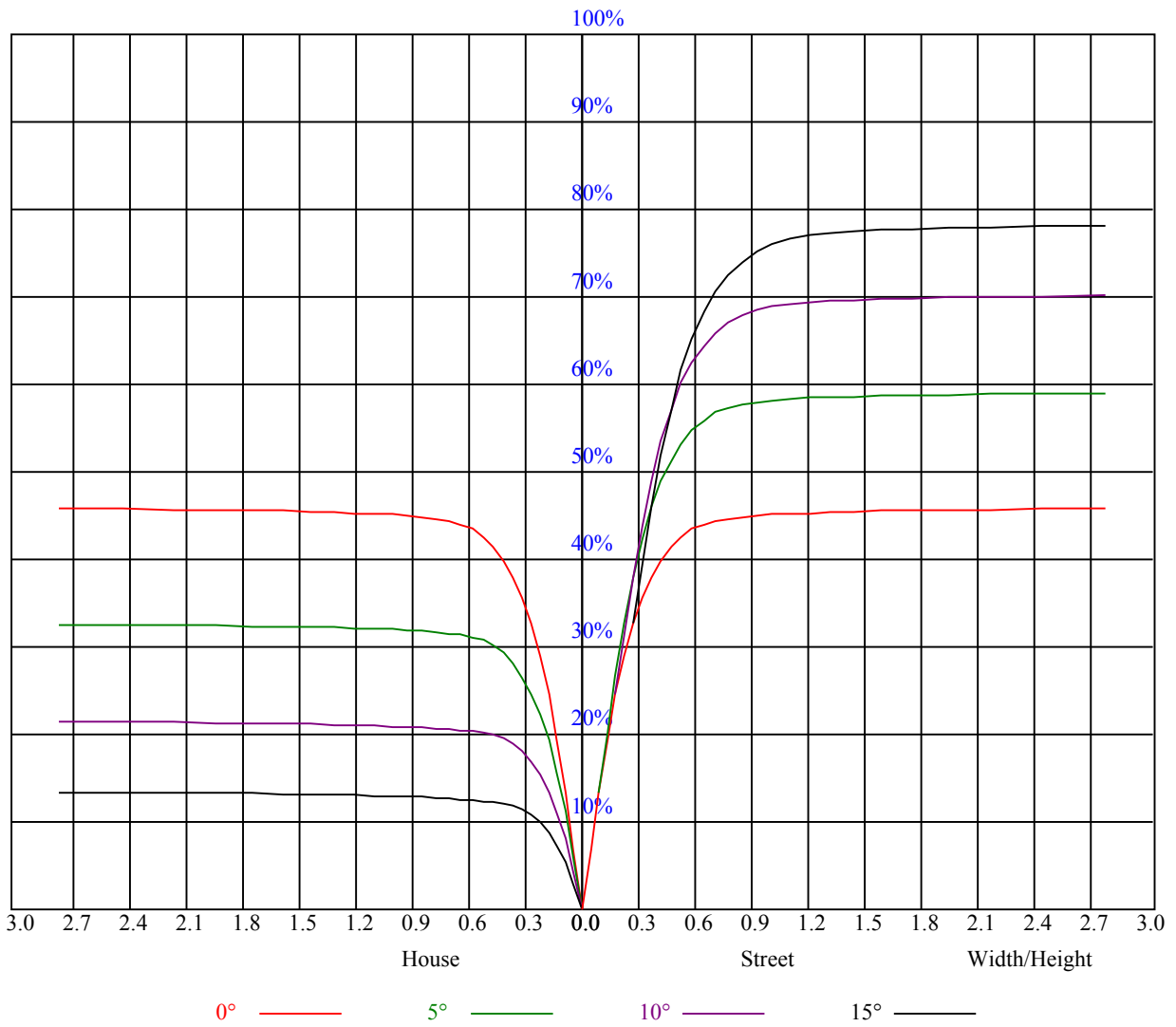


Illumination assessment according UGR											
Rf of Ceiling	70	70	50	50	30	70	70	50	50	30	
Rf of Wall	50	30	50	30	30	50	30	50	30	30	
Rf of Floor	20	20	20	20	20	20	20	20	20	20	
Room dimensions		Viewed crosswise					Viewed endwise				
X	Y										
2H	2H	非数字	非数字	非数字	非数字	非数字	非数字	非数字	非数字	非数字	
	3H	非数字	非数字	非数字	非数字	非数字	非数字	非数字	非数字	非数字	
	4H	非数字	非数字	非数字	非数字	非数字	非数字	非数字	非数字	非数字	
	6H	非数字	非数字	非数字	非数字	非数字	非数字	非数字	非数字	非数字	
	8H	非数字	非数字	非数字	非数字	非数字	非数字	非数字	非数字	非数字	
4H	12H	非数字	非数字	非数字	非数字	非数字	非数字	非数字	非数字	非数字	
	2H	非数字	非数字	非数字	非数字	非数字	非数字	非数字	非数字	非数字	
	3H	非数字	非数字	非数字	非数字	非数字	非数字	非数字	非数字	非数字	
	4H	非数字	非数字	非数字	非数字	非数字	非数字	非数字	非数字	非数字	
	6H	非数字	非数字	非数字	非数字	非数字	非数字	非数字	非数字	非数字	
8H	8H	非数字	非数字	非数字	非数字	非数字	非数字	非数字	非数字	非数字	
	12H	非数字	非数字	非数字	非数字	非数字	非数字	非数字	非数字	非数字	
	4H	非数字	非数字	非数字	非数字	非数字	非数字	非数字	非数字	非数字	
	6H	非数字	非数字	非数字	非数字	非数字	非数字	非数字	非数字	非数字	
	8H	非数字	非数字	非数字	非数字	非数字	非数字	非数字	非数字	非数字	
12H	12H	非数字	非数字	非数字	非数字	非数字	非数字	非数字	非数字	非数字	
	4H	非数字	非数字	非数字	非数字	非数字	非数字	非数字	非数字	非数字	
	6H	非数字	非数字	非数字	非数字	非数字	非数字	非数字	非数字	非数字	
	8H	非数字	非数字	非数字	非数字	非数字	非数字	非数字	非数字	非数字	
Variation with the observer position at spacings:											
S = 1.0H		非数字/非数字					非数字/非数字				
S = 1.5H		非数字/非数字					非数字/非数字				
S = 2.0H		非数字/非数字					非数字/非数字				
Standard tables:		BK0					BK0				
Uncorrected UGR		负无穷大					负无穷大				

UGR calculation is based on CIE Publ. 117 ,S/H = 0.25



RHOCC	80			70			50			30			10			0
RHOW	50	30	10	50	30	10	50	30	10	50	30	10	50	30	10	0
RCR	COEFFICIENTS OF UTILIZATION RHOFc=20 CU															
0	1.10	1.10	1.10	1.07	1.07	1.07	1.03	1.03	1.03	0.98	0.98	0.98	0.94	0.94	0.94	0.92
1	1.03	1.01	0.99	1.01	0.99	0.98	0.97	0.96	0.95	0.94	0.93	0.92	0.91	0.90	0.89	0.88
2	0.97	0.94	0.91	0.96	0.93	0.90	0.93	0.90	0.88	0.90	0.88	0.86	0.88	0.86	0.85	0.83
3	0.92	0.88	0.85	0.91	0.87	0.85	0.89	0.86	0.83	0.86	0.84	0.82	0.84	0.82	0.81	0.79
4	0.88	0.83	0.80	0.87	0.83	0.80	0.85	0.81	0.79	0.83	0.80	0.78	0.81	0.79	0.77	0.76
5	0.84	0.79	0.76	0.83	0.79	0.76	0.81	0.78	0.75	0.80	0.77	0.74	0.79	0.76	0.74	0.73
6	0.80	0.76	0.72	0.79	0.75	0.72	0.78	0.74	0.72	0.77	0.74	0.71	0.76	0.73	0.71	0.70
7	0.77	0.72	0.69	0.76	0.72	0.69	0.75	0.71	0.69	0.74	0.71	0.68	0.73	0.70	0.68	0.67
8	0.74	0.69	0.66	0.73	0.69	0.66	0.72	0.69	0.66	0.72	0.68	0.66	0.71	0.68	0.65	0.64
9	0.71	0.67	0.64	0.71	0.67	0.64	0.70	0.66	0.63	0.69	0.66	0.63	0.69	0.65	0.63	0.62
10	0.69	0.64	0.61	0.68	0.64	0.61	0.68	0.64	0.61	0.67	0.64	0.61	0.66	0.63	0.61	0.60



Intensity data(cd)

C/γ(°)	0.0	1.0	2.0	3.0	4.0	5.0	6.0	7.0	8.0
0.0	5336.64	5264.13	5157.29	5007.84	4773.69	4561.69	4331.42	4094.51	3783.97
45.0	5377.60	5352.14	5289.04	5201.02	5018.36	4829.60	4619.81	4330.31	4077.90
90.0	5346.60	5290.14	5197.15	5063.19	4841.78	4627.01	4346.92	4105.02	3859.25
135.0	5365.42	5349.37	5295.68	5220.40	5070.39	4888.28	4635.86	4419.98	4185.29
180.0	5336.64	5383.14	5369.30	5336.09	5240.88	5122.42	4921.49	4713.91	4492.50
225.0	5377.60	5360.44	5295.13	5208.77	5075.37	4896.58	4634.76	4401.72	4148.20
270.0	5346.60	5368.19	5356.57	5293.46	5206.01	5074.26	4906.54	4640.85	4406.15
315.0	5365.42	5350.48	5292.36	5192.72	5062.09	4846.76	4636.42	4408.36	4169.23
360.0	5336.64	5264.13	5157.29	5007.84	4773.69	4561.69	4331.42	4094.51	3783.97
C/γ(°)	9.0	10.0	11.0	12.0	13.0	14.0	15.0	16.0	17.0
0.0	3531.01	3278.04	2949.79	2686.86	2375.22	2147.17	1944.57	1758.03	1560.42
45.0	3831.02	3579.16	3316.79	2996.84	2726.72	2476.52	2235.18	1961.18	1760.80
90.0	3606.29	3273.61	3005.70	2747.75	2491.47	2198.09	1982.77	1791.24	1623.52
135.0	3889.14	3632.86	3387.64	3070.46	2815.28	2556.78	2319.87	2040.89	1846.04
180.0	4257.80	3948.93	3690.42	3426.94	3165.67	2849.05	2598.30	2360.83	2134.43
225.0	3891.91	3570.31	3307.38	3046.11	2719.52	2470.43	2229.09	1961.18	1772.98
270.0	4166.47	3914.05	3579.16	3309.59	3032.27	2696.27	2439.43	2134.99	1915.23
315.0	3853.72	3588.57	3263.09	2996.84	2735.57	2420.06	2187.02	1976.12	1743.08
360.0	3531.01	3278.04	2949.79	2686.86	2375.22	2147.17	1944.57	1758.03	1560.42
C/γ(°)	18.0	19.0	20.0	21.0	22.0	23.0	24.0	25.0	26.0
0.0	1418.16	1082.05	1082.05	1031.68	946.99	875.20	813.81	737.14	672.82
45.0	1555.44	1421.48	1300.26	1159.10	1068.88	985.85	897.84	836.95	777.72
90.0	1439.19	1227.19	1091.13	1068.32	984.24	891.41	828.15	769.36	703.88
135.0	1675.00	1523.33	1385.50	1226.08	1118.14	998.58	920.53	849.12	771.63
180.0	1883.68	1709.87	1523.88	1377.75	1242.69	1104.86	1010.20	923.85	844.14
225.0	1598.61	1408.20	1101.26	1101.26	1052.55	945.77	878.41	819.90	764.21
270.0	1725.37	1554.88	1369.45	1238.81	1118.70	1032.34	952.08	868.50	811.48
315.0	1577.58	1424.25	1103.14	1103.14	1032.07	945.44	875.42	798.64	740.13
360.0	1418.16	1082.05	1082.05	1031.68	946.99	875.20	813.81	737.14	672.82
C/γ(°)	27.0	28.0	29.0	30.0	31.0	32.0	33.0	34.0	35.0
0.0	588.96	521.98	455.45	375.08	311.64	253.02	186.93	143.26	110.71
45.0	710.74	624.94	555.75	488.22	420.13	336.55	289.50	289.50	164.95
90.0	617.19	546.56	476.15	406.74	322.43	259.22	202.65	145.80	113.09
135.0	704.10	633.25	544.13	474.93	407.40	342.64	280.64	280.64	156.10
180.0	781.04	722.92	658.15	567.93	497.63	429.54	362.57	283.96	283.96
225.0	693.08	630.75	563.83	477.87	408.62	324.43	264.15	208.41	148.79
270.0	759.45	689.71	623.28	536.93	466.63	395.22	309.43	292.82	292.82
315.0	678.08	595.77	526.97	443.88	378.23	314.35	254.46	200.21	143.86
360.0	588.96	521.98	455.45	375.08	311.64	253.02	186.93	143.26	110.71
C/γ(°)	36.0	37.0	38.0	39.0	40.0	41.0	42.0	43.0	44.0
0.0	91.39	77.44	68.64	61.55	55.46	49.38	45.11	40.96	35.87
45.0	121.39	100.02	85.08	75.72	68.25	60.06	54.74	50.10	45.78
90.0	92.61	78.82	70.13	63.49	56.29	51.53	47.00	42.90	37.75
135.0	116.41	85.96	75.06	67.75	60.28	55.30	49.76	45.61	41.74
180.0	213.44	127.15	88.46	73.40	64.43	58.79	53.97	48.49	44.28
225.0	112.98	90.12	78.05	70.47	62.66	57.46	52.70	48.43	43.34
270.0	141.43	100.91	82.70	73.40	66.20	58.73	53.53	48.93	44.84
315.0	109.77	88.34	76.17	66.20	59.78	53.25	48.66	44.50	39.47
360.0	91.39	77.44	68.64	61.55	55.46	49.38	45.11	40.96	35.87

Intensity data(cd)

C/γ(°)	45.0	46.0	47.0	48.0	49.0	50.0	51.0	52.0	53.0
0.0	32.16	28.62	26.18	24.08	22.31	20.48	19.26	18.27	17.38
45.0	40.35	36.31	32.99	30.17	27.01	24.85	23.08	21.20	19.93
90.0	33.93	30.72	28.06	25.24	23.30	21.59	19.87	18.76	17.60
135.0	37.86	33.16	29.89	27.23	24.96	22.53	21.03	19.71	18.38
180.0	40.52	36.98	32.60	29.45	26.90	24.69	22.36	20.81	19.54
225.0	39.52	34.82	31.66	29.06	26.13	24.13	22.42	20.59	19.32
270.0	40.02	36.26	31.88	29.06	26.68	24.24	22.58	21.09	19.54
315.0	35.54	31.99	28.45	26.02	23.97	22.25	20.43	19.21	18.16
360.0	32.16	28.62	26.18	24.08	22.31	20.48	19.26	18.27	17.38
C/γ(°)	54.0	55.0	56.0	57.0	58.0	59.0	60.0	61.0	62.0
0.0	16.44	15.78	15.28	14.72	14.23	13.89	13.56	13.17	12.90
45.0	18.60	17.71	16.94	16.05	15.44	14.89	14.45	13.95	13.56
90.0	16.83	16.11	15.39	14.89	14.45	14.06	13.67	13.34	13.06
135.0	17.49	16.72	15.94	15.39	14.89	14.39	14.06	13.67	13.28
180.0	18.21	17.27	16.50	15.67	15.17	14.56	14.12	13.78	13.45
225.0	18.21	17.33	16.55	15.72	15.17	14.61	14.12	13.78	13.45
270.0	18.43	17.49	16.66	15.78	15.22	14.72	14.28	13.78	13.51
315.0	17.21	16.27	15.67	15.11	14.50	14.12	13.67	13.40	13.12
360.0	16.44	15.78	15.28	14.72	14.23	13.89	13.56	13.17	12.90
C/γ(°)	63.0	64.0	65.0	66.0	67.0	68.0	69.0	70.0	71.0
0.0	12.51	12.23	12.01	11.73	11.35	11.07	10.74	10.52	10.13
45.0	13.23	12.90	12.57	12.23	11.96	11.51	11.29	10.96	10.57
90.0	12.79	12.40	12.18	11.90	11.51	11.24	10.96	10.57	10.30
135.0	13.06	12.79	12.51	12.23	11.90	11.62	11.35	10.96	10.68
180.0	13.17	12.84	12.62	12.34	12.01	11.79	11.51	11.13	10.85
225.0	13.06	12.73	12.34	12.07	11.73	11.51	11.13	10.85	10.52
270.0	13.12	12.84	12.62	12.23	12.01	11.73	11.46	11.13	10.79
315.0	12.79	12.51	12.29	12.01	11.73	11.35	11.07	10.79	10.46
360.0	12.51	12.23	12.01	11.73	11.35	11.07	10.74	10.52	10.13
C/γ(°)	72.0	73.0	74.0	75.0	76.0	77.0	78.0	79.0	80.0
0.0	9.85	9.58	9.24	9.02	8.80	8.58	8.36	8.14	8.03
45.0	10.30	9.96	9.69	9.41	9.13	8.97	8.69	8.52	8.30
90.0	10.02	9.69	9.41	9.19	8.97	8.69	8.52	8.36	8.19
135.0	10.30	10.02	9.80	9.47	9.24	9.02	8.80	8.64	8.41
180.0	10.57	10.24	9.91	9.69	9.35	9.13	8.97	8.75	8.52
225.0	10.24	9.91	9.63	9.41	9.13	8.86	8.69	8.47	8.30
270.0	10.52	10.24	9.91	9.69	9.35	9.08	8.86	8.69	8.41
315.0	10.13	9.85	9.52	9.30	9.08	8.80	8.58	8.41	8.19
360.0	9.85	9.58	9.24	9.02	8.80	8.58	8.36	8.14	8.03
C/γ(°)	81.0	82.0	83.0	84.0	85.0	86.0	87.0	88.0	89.0
0.0	7.86	7.69	7.58	7.36	7.31	7.20	7.09	6.92	6.92
45.0	8.08	7.92	7.75	7.53	7.42	7.31	7.20	7.09	6.86
90.0	7.97	7.80	7.58	7.47	7.36	7.25	7.14	7.03	6.86
135.0	8.19	8.03	7.86	7.64	7.53	7.42	7.25	7.14	6.97
180.0	8.30	8.14	7.97	7.80	7.64	7.47	7.36	7.20	7.09
225.0	8.14	7.92	7.75	7.58	7.47	7.31	7.20	7.03	6.92
270.0	8.25	8.08	7.92	7.80	7.58	7.47	7.31	7.14	7.09
315.0	8.03	7.86	7.75	7.58	7.47	7.31	7.14	7.09	6.92
360.0	7.86	7.69	7.58	7.36	7.31	7.20	7.09	6.92	6.92

Intensity data(cd)

C/γ(°)	90.0
0.0	6.92
45.0	6.92
90.0	6.92
135.0	6.92
180.0	6.97
225.0	6.86
270.0	6.86
315.0	6.86
360.0	6.92